

LAWN & GARDEN



Ramcar Lawn & Garden Batteries offer great power and endurance for heavy duty vehicles with advanced electrical equipment and power requirements. Our improved plate construction provides high starting power and endurance suitable for all classes and commercial applications. The range is completely sealed and spill proof.



CASING

Impact-resistant, all-weather polypropylene covers and containers designed for all types of battery trays and compartments.

HANDLE

Ergonomically designed for convenience and safety during handling, transportation, and installation.

ELECTROLYTE

High-purity electrolyte specially formulated to minimize water loss and slow down self-discharge.

TERMINAL POSTS & CONNECTORS

Thicker posts and through-the-partition cell designed to offer more efficient current flow, helping achieve maximum capacity, delivering exceptional durability and longer service; Torque-resistant cover bushings specially designed to prevent acid seepage.

VENTING SYSTEM

Maintenance Free Batteries (2-piece covers)

Gas labyrinth in the venting system that promotes condensation of the electrolyte that evaporates during charging, minimizing water loss and allowing maintenance-free operation; Contains flame arrestors that helps prevent explosions.

BATTERY CONTAINER

Engineered to minimize vibration of battery plates and effectively channel active mass residues to increase mechanical durability, to prevent early formation of bridge shorts, and to extend the life of the battery.

SEPARATORS

High Endurance

Glass-mat laminated polyethylene envelope separators secure active masses, preventing shedding even through deep discharges and tough road conditions, resulting in exceptional durability and longer service life.

Regular

Low-resistance polyethylene envelope separators increase battery starting power.

LAWN & GARDEN

PASTE Specially formulated paste with RamCarbon™ to maximize cranking capability and increase cycle endurance.

High Endurance (General)

Rigid, full-framed positive and negative grids with radial wire architecture optimized for mechanical endurance, corrosion resistance, and current delivery.

High Endurance (Maintenance-Free Batteries)

Specially formulated lead-calcium alloy to balance between plate rigidity and corrosion resistance and, at the same time, minimize water loss.

GRID

High Endurance (Low-Maintenance Batteries)

Specially formulated lead-antimony alloy for positive plate grids and lead-calcium alloy or negative plate grids to achieve a good balance between deep discharge resistance and low water loss.

Regular (Maintenance-Free Batteries)

Expanded wrought lead strips with specially formulated lead-calcium alloy and engineered strip casting, rolling, and expansion technologies to increase corrosion resistance and maximize current delivery.

WATER LOSS RATE

Maintenance Free Batteries

W4 level based on EN50342-1-2015 (VRLA-level water loss).

Low Maintenance Batteries

W2-W3 level based on EN50342-1-2015 (LM to MF-level water loss).

CYCLE LIFE

Achieves 2-3x the required life cycles of the Battery Council International.

SPECIFICATION TABLE

Application	BCI Group	Part No.	"RC, 25 Amps"	"AH, C20"	"CCA, 0 F"	Length, mm	Width, mm	Height, mm	Total Height, mm	Length, in	Width, in	Height, in	Total Height, in	Handle	Cover Design version	Finish (Cover-Cont)	Terminal Type	Base Hold Down	Cell Layout
Lawn & Garden	U1, U1R*	U1-2 MF	30	20	225	196	128	159	184	7 3/4	5	6 1/4	7 1/4	BC1	R4	M-M	D	B00	0, 1
		U1-3 MF	40	30	300	196	128	159	184	7 3/4	5	6 1/4	7 1/4	BC1	R4	M-M	D	B00	0, 1
		U1-4 MF	50	35	360	196	128	159	184	7 3/4	5	6 1/4	7 1/4	BC1	R4	M-M	D	B00	0, 1

TERMINAL TYPE

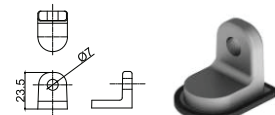
- A** Pencil Post
- B** Standard
- C** Special Marine
- D** U1
- E** Stud
- F** Dual Marine
- G** Side Terminal
- H** Dual Terminal

HANDLES

- BC1** briefcase handle, 1-piece
- BC2** briefcase handle, 2-piece
- PB1** picnic basket handle, 1-piece
- PB2** picnic basket, 2-piece
- RH2** rope handle, 2-piece
- BS1** belt strap, 1-piece

FINISH (COVER-CONTAINER)

- M-M** Matte-Matte
- G-G** Glossy-Glossy
- G-M** Glossy-Matte



U1